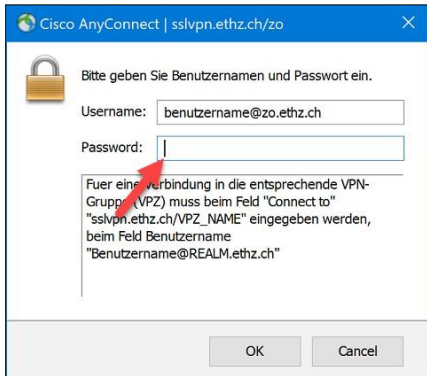


## Instructions for a secure password entry

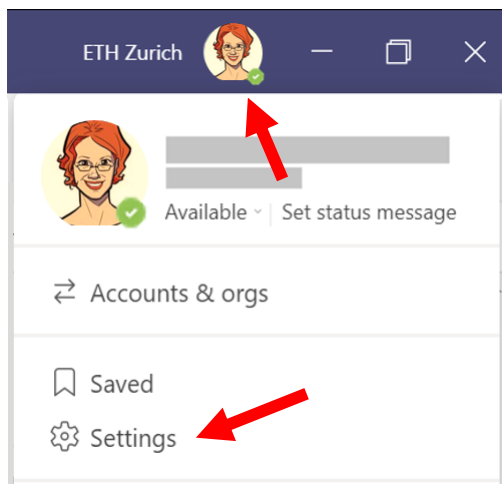
### Password entry

Before you enter a password, make sure that the cursor is in the correct application and in the correct login window - in this case in the Cisco AnyConnect Client:

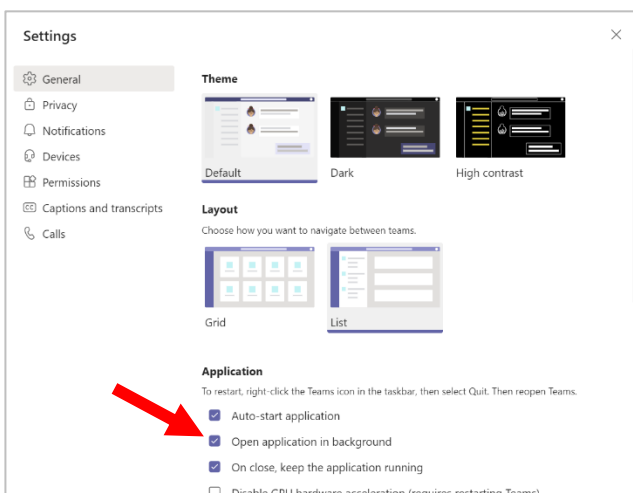


Important: Before pressing the ENTER key, always check whether the password has been entered in the correct location!

### Open Microsoft Teams in the background

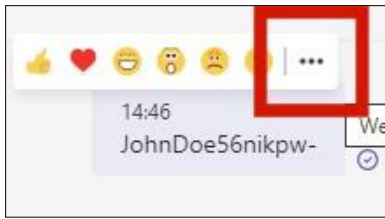


Open your Microsoft Teams settings in the top right.

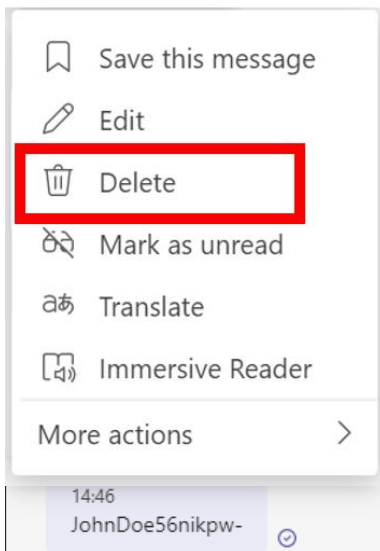


In the «General» chapter, activate the checkbox next to «Open application in background».

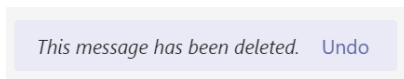
## Deleting a sent message in Microsoft Teams



Move the mouse pointer over the incorrectly entered password and then click on the three dots in the selection that appears.



Click Delete to remove the password from the chat.



The message has now been deleted from the chat.

**IMPORTANT:** For security reasons, please change the password in question despite deleting it from the chat!

VPN-Password can be changed under: <http://password.ethz.ch>